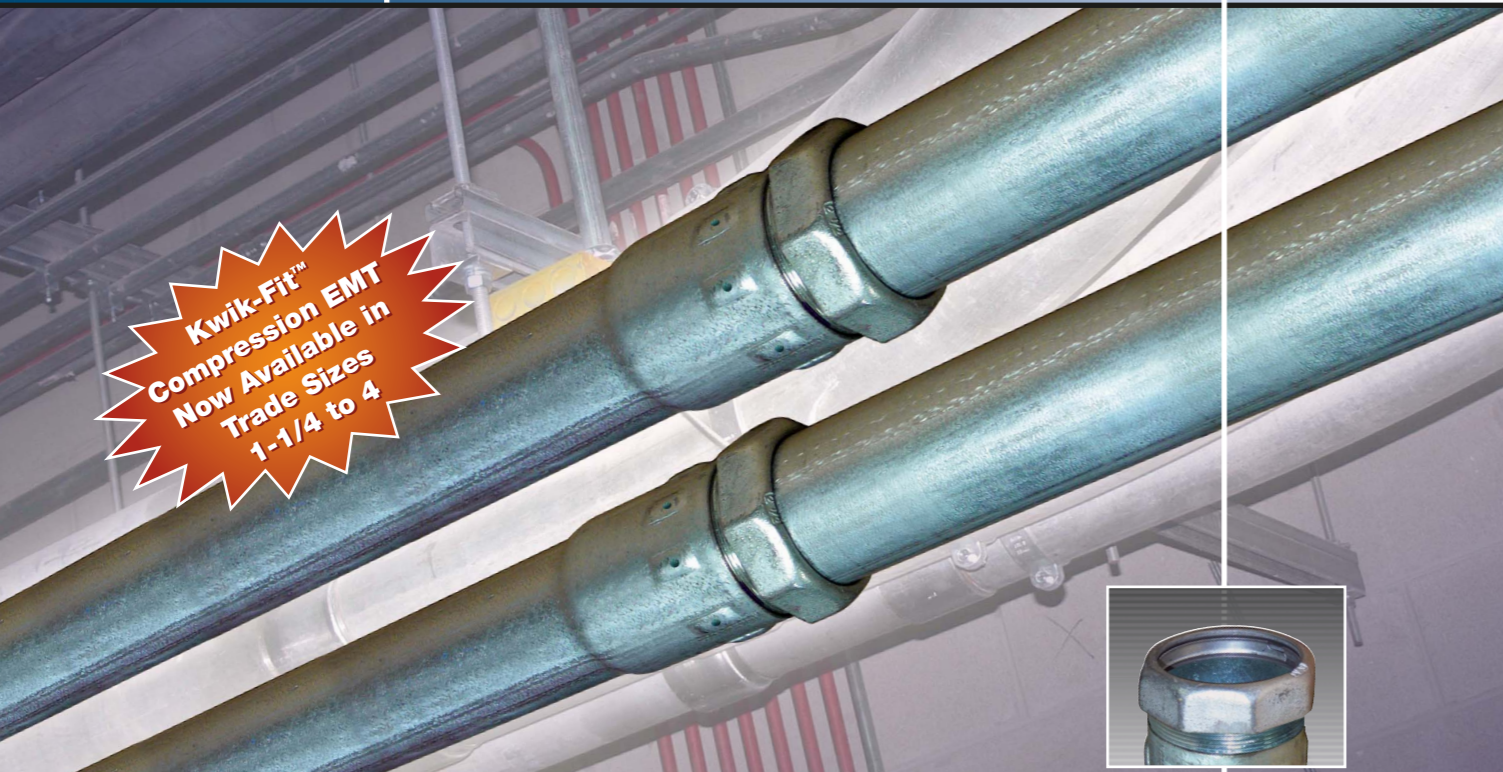


KWIK-FIT® COMPRESSION EMT

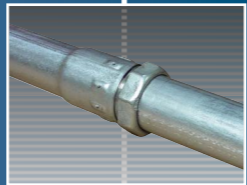
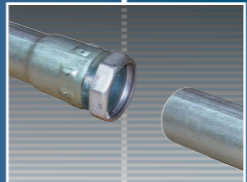
Product Catalog



**Kwik-Fit™
Compression EMT
Now Available in
Trade Sizes
1-1/4 to 4**



- Integral compression fitting
- Fast 2-step installation
- E-Z Pull® interior coating for fast wire-pulling
- Material and labor savings



www.alliedeg.us

Allied Tube & Conduit - Electrical Family of Innovative Products

• RIGID & IMC CONDUIT		• KWIK-FIT® EMT	
• ALUMINUM CONDUIT		• KWIK-COUPLE®	
• TRUE COLOR™ EMT		• KWIK-FIT® COMPRESSION EMT	
• E-Z PULL® EMT		• PVC CONDUIT & FITTINGS	

• **ALLIED TUBE & CONDUIT® - ELECTRICAL**
16100 S. Lathrop Avenue
Harvey, IL 60426
Tel. 708-339-1610
800-882-5543
Fax 708-339-0615



Allied Tube & Conduit
Registered to ISO 9001:2000
File Numbers A2106, A1654, A12758

www.alliedeg.us

KWIK-FIT® COMPRESSION EMT

Steel EMT with an Integral Compression Fitting

Allied's Kwik-Fit® Compression EMT (Electrical Metal Tubing) has an integrated steel compression coupling that significantly reduces installation time and eliminates the need to purchase and store separate couplings. Simply insert the plain end of the EMT into the compression coupling end and tighten the gland nut.

Kwik-Fit Compression EMT is all steel for superior strength, performance and excellent ground return. Allied's unique in-line Flo-Coat® hot galvanizing process fully protects Kwik-Fit Compression EMT with a triple-sealed compatible organic layer that protects against white rust and increases corrosion resistance.

The interior of Kwik-Fit Compression EMT is protected with Allied's superior E-Z Pull® interior coating. The new coating makes wire-pulling even easier by lowering the coefficient of static friction.

Unlike traditional compression couplings, only one gland nut needs to be tightened. Kwik-Fit Compression EMT can reduce the installation time by more than 50%*.

* Installation time will vary with job site conditions.

FEATURES

- No extra fittings to inventory, purchase, store, or install
- Hot galvanized steel using patented inline Flo-Coat® process for long lasting exterior protection
- Excellent mechanical protection for conductors
- Ductility for faster and easier bending
- E-Z Pull® interior coating provides a smooth raceway for fast wire-pulling
- Superb EMI shielding characteristics

NEC® APPROVED FOR PLENUM USE

- Meets the requirements of section 300.22 of the National Electrical Code® (NEC) and sections 18-27-300.22(b)(1) and 18-27-300.22(c)(1)(a) of the Chicago Electrical Code

UL LISTED

- Listed to UL Safety Standards 797 and 514-B. KWIK-FIT® COMPRESSION EMT also meets ANSI Standard C80.3
- UL listed as concrete-tight

Rectangular bundles for easy handling and less damage.

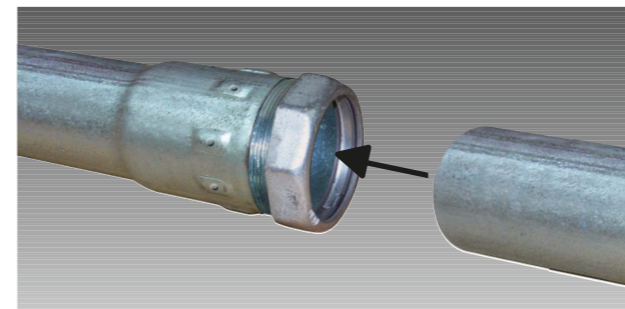


Allied Tube & Conduit
Registered to ISO 9001:2000
File Numbers A2106, A1654, A12768

Kwik-Fit® Compression EMT is a trademark of Allied Tube & Conduit Corporation. Patent Pending

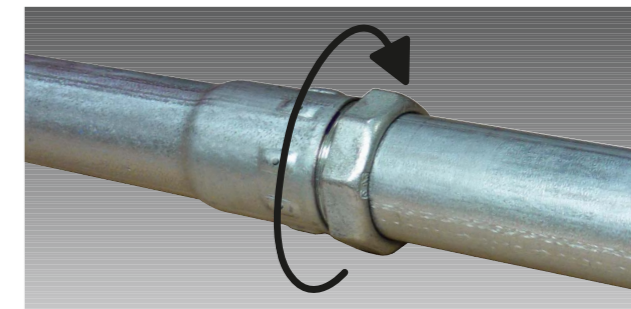
SPECIFICATIONS FOR KWIK-FIT® COMPRESSION EMT

Installation Steps



Step 1

Insert the plain end of the EMT into the integral fitting end of Kwik-Fit Compression EMT. Insert fully until seated.



Step 2

Turn the gland nut until snug and tighten gland nut with pliers or wrench. Kwik-Fit® Compression EMT can reduce the installation time by more than 50%*.

Weights and Dimensions

Trade Size Designators		Approx. Wt. Per 100 Ft. (30.5M)		Nominal Outside Diameter		Nominal Wall Thickness		Quantity		Master Bundles			
U.S.	Metric	lb.	kg.	in.	mm.	in.	mm.	ft.	m.	lb.	kg.	cu. ft.	cu. m.
1-1/4	35	107.4	48.7	1.510	35.1	0.065	1.65	840	256.0	902.2	409.2	25.2	0.71
1-1/2	41	125.3	56.8	1.740	40.9	0.065	1.65	720	219.5	902.1	409.1	30.3	0.86
2	53	162.4	73.7	2.197	52.5	0.065	1.65	500	152.4	812.2	368.3	28.6	0.81
2-1/2	63	239.0	108.0	2.875	73.0	0.072	1.83	350	106.8	836.5	379.8	29.2	0.83
3	78	291.0	132.0	3.500	88.9	0.072	1.83	300	91.5	873.0	396.3	33.5	0.95
3-1/2	91	383.0	174.0	4.000	101.6	0.083	2.11	250	76.3	957.5	434.7	43.4	1.23
4	103	431.0	196.0	4.500	114.3	0.083	2.11	250	76.3	1077.5	489.2	52.5	1.48

*Outside diameter tolerances: +/- .005 in. (.13mm) for trade sizes 1/2 (16mm) through 2 (53mm);
+/- .010 in. (.25mm) for trade sizes 2-1/2 (63mm);
+/- .015 in. (.38mm) for trade size 3 (78mm);
+/- .020 in. (.51mm) for trade sizes 3-1/2 (91mm) and 4 (103mm).
NOTE: Length = 10 ft. (3.05m) with a tolerance of +/- .25 in. (6.35 mm)

* Installation time will vary with job site conditions.

allied
TUBE & CONDUIT®

A PART OF **atkore**
INTERNATIONAL